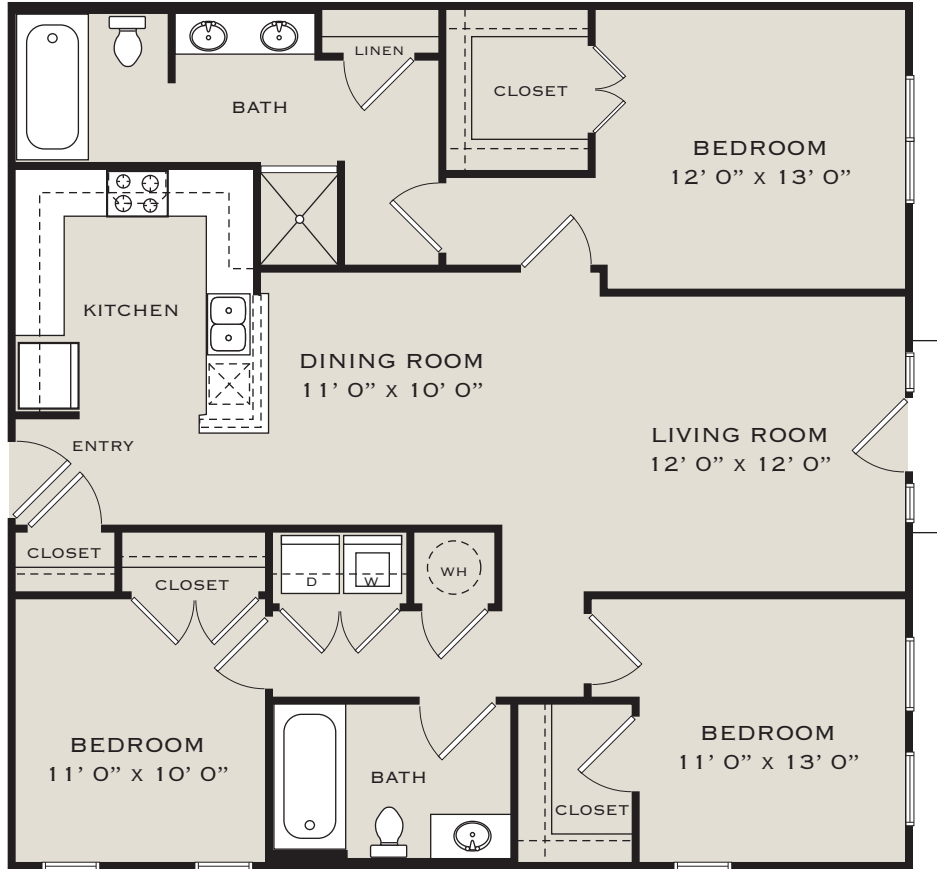


JOHN'S CREEK WALK

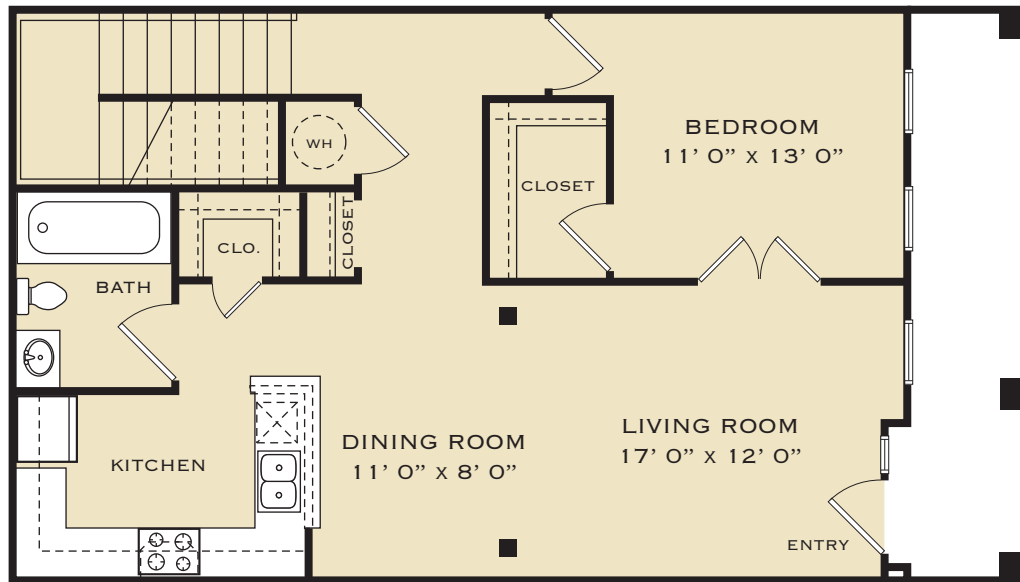
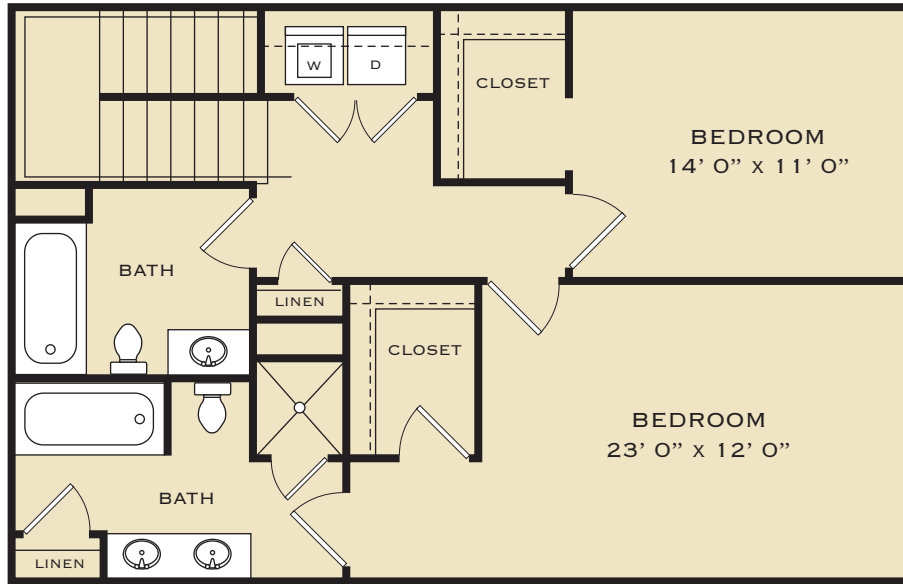


**THE RITZ (C1)**  
THREE BEDROOM/TWO BATH FLAT  
1,322 SQUARE FEET

ALL SQUARE FOOTAGES AND ROOM DIMENSIONS ARE APPROXIMATE.



# JOHN'S CREEK WALK

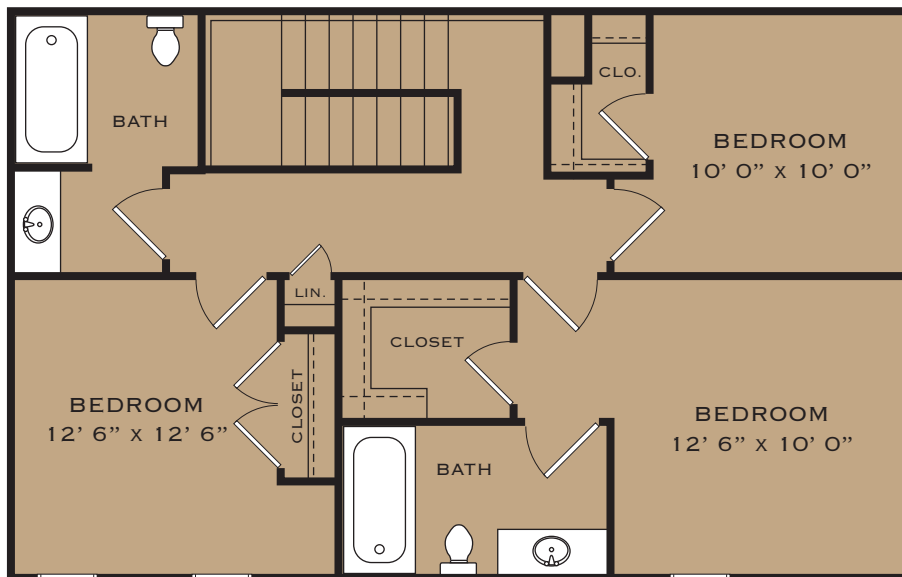
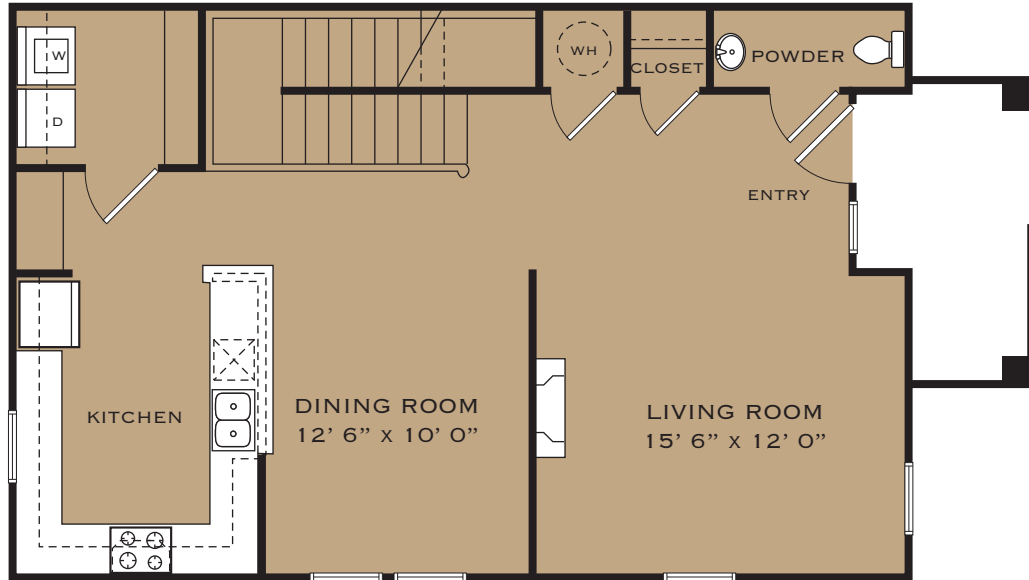


**THE REGAL (TH1)**  
 THREE BEDROOM/THREE BATH TOWNHOUSE  
 1,864 SQUARE FEET

ALL SQUARE FOOTAGES AND ROOM DIMENSIONS ARE APPROXIMATE.



# JOHN'S CREEK WALK



## THE MAJESTIC (TH2)

THREE BEDROOM/TWO AND ONE HALF BATH TOWNHOUSE  
1,792 SQUARE FEET

ALL SQUARE FOOTAGES AND ROOM DIMENSIONS ARE APPROXIMATE.